



Mercy Health

Care first

# Your accommodation options



## Mercy Place Mont Clare

9 Dean Street  
Claremont WA 6010  
Phone: 1300 599 641  
Email: [MPMontClare@mercy.com.au](mailto:MPMontClare@mercy.com.au)

[mercyhealth.com.au](http://mercyhealth.com.au)

# Our home

---



At Mercy Place Mont Clare, we are proud to provide high-quality care and accommodation where residents can feel safe, comfortable and valued. You can choose from a variety of suites, all of which are stylishly decorated with modern amenities for your enjoyment.

Built in 2012, our contemporary home features large dining rooms, lounge rooms, recreational areas and cosy sitting corners where you can relax or entertain family and friends. All common

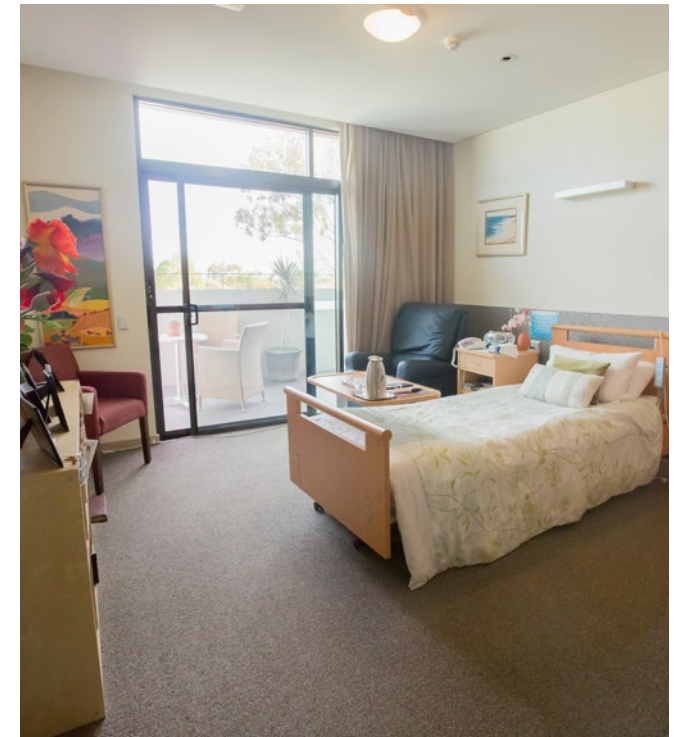
areas display contemporary artwork and have well-appointed furniture and premium décor. Enjoy the fresh air in one of our landscaped gardens or the two popular rooftop escapes, which offer barbecues and outdoor settings for entertainment and leisure.

Mercy Place Mont Clare provides additional services for residents. Please speak with the Service Manager for a full list of services and the cost.

# Choosing a room

---

Our bright, spacious suites all boast a sophisticated and stylish design. Enjoy the high-quality furniture and fittings, including private ensuites, wall-mounted flat screen TVs, WiFi, reverse-cycle air conditioning and built-in wardrobes with ample space for your personal treasures. Add a touch of luxury by choosing a suite with beautiful views of the Swan River or Perth CBD from a private or shared balcony.



# Our rooms

You can choose to pay for your suite by a **Refundable Accommodation Deposit (RAD)**, a **Daily Accommodation Payment (DAP)** or any combination you choose. A RAD is paid as a lump sum. A DAP accrues daily and is paid periodically, for example monthly. A combination payment includes a partial lump sum and daily payments. We also offer a drawdown option.

See our *Understanding the costs* brochure for an explanation of payment options or speak to us about how we can tailor a payment package to suit your needs.

	FEATURES						PAYMENT OPTIONS			
	Suite	Ensuite	Size	Floor	View	Extra	RAD	DAP	Combination payment example (50% RAD + 50% DAP)	
Deluxe (Valentine)	Single	Private	20.3m <sup>2</sup>	G			\$	\$	RAD \$	+ DAP \$
Deluxe (McDonald)	Single	Private	20.3m <sup>2</sup>	1		Extra services	\$	\$	RAD \$	+ DAP \$
Premier (Valentine)	Single	Private	20.3m <sup>2</sup>	G	✓		\$	\$	RAD \$	+ DAP \$
Premier	Single	Private	20.3m <sup>2</sup>	1, 2	✓	Extra services	\$	\$	RAD \$	+ DAP \$
Superior	Single	Private	20–25m <sup>2</sup>	1, 2	✓	Extra services	\$	\$	RAD \$	+ DAP \$
Executive	Single	Private	20–25m <sup>2</sup>	1, 2	✓	Extra services	\$	\$	RAD \$	+ DAP \$

Prices are effective as of \_\_\_\_\_ and are subject to change.

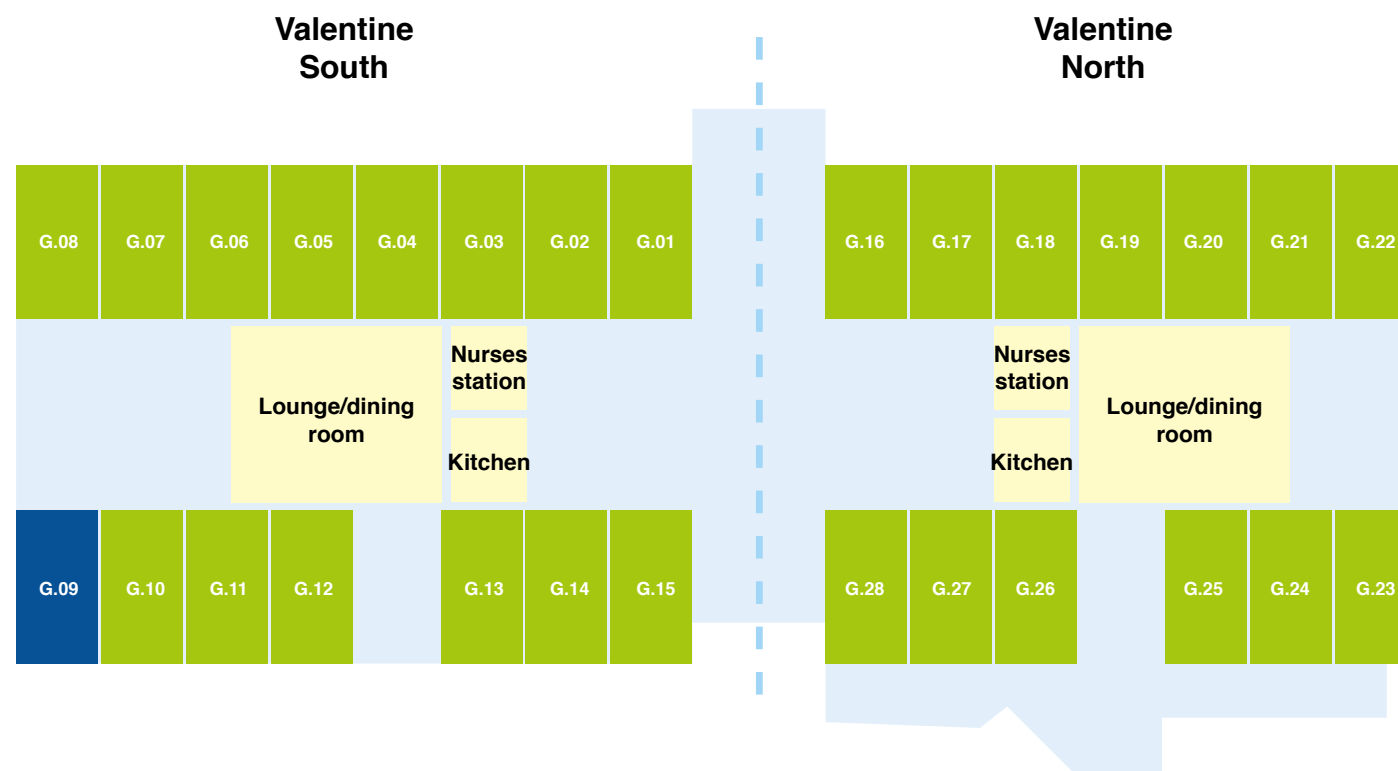
# Valentine Suites (ground floor)

## DELUXE (VALENTINE)

These charming suites on the ground floor are well-maintained with a comfortable look and feel. The private suites feature a standard electronic bed, views towards Claremont Quarter or internal spaces, and some boast a balcony or garden access. Enjoy your private ensuite designed with safety and independence in mind, as well as your own reverse-cycle air conditioning. Flat screen TVs are available for hire on this floor.

## PREMIER (VALENTINE)

There is just one Premier suite on the ground floor — and it is the best on the block. Suite 9 has the luxury of direct access to a large balcony and streetscape view, with a private ensuite, standard electronic bed and a flat screen TV available for hire. All our rooms have reverse-cycle air conditioning and individual thermostat control.



# McDonald Suites (first floor)

## DELUXE (MCDONALD)

These charming suites on the first floor offer all the benefits of our ground floor Deluxe suites (see previous page) with the additional luxury of Extra Services including a flat screen TV.

## PREMIER

Many of these desirable suites on the first and second floors offer partial views of the Swan River or Perth CBD from private balconies and some also feature skylights. Enjoy your personal wall-mounted flat screen TV, luxurious multi-function high low European bed, reverse-cycle air conditioning, as well as easy access to landscaped gardens and rooftops. You also have your own bar fridge, safe, telephone and WiFi.

## SUPERIOR

Savour the abundant natural light and fresh air afforded by large windows in these sumptuous suites. Located on the first and second floors, the Superior suites measure 20–25m<sup>2</sup> and offer river and city views from private balconies. Enjoy the high-quality furniture and fittings, including multi-function high low European beds, wall-mounted flat screen TVs, as well as your own personal bar fridge, safe and reverse-cycle air conditioning.



## EXECUTIVE

If you like living in the lap of luxury, secure one of just seven stunning Executive suites located in prime position on the uppermost floors of Mercy Place Mont Clare. With abundant natural light and excellent views of the Swan River or Perth CBD, you'll be tempted to spend all day entertaining on your spacious private balcony. Measuring 20–25m<sup>2</sup>, the expansive suites on the Aldo floor

also boast direct access to the rooftop gardens. The suites feature stylish furniture and fittings including wall-mounted flat screen TVs, your own bar fridge and safe, and reverse-cycle air conditioning.

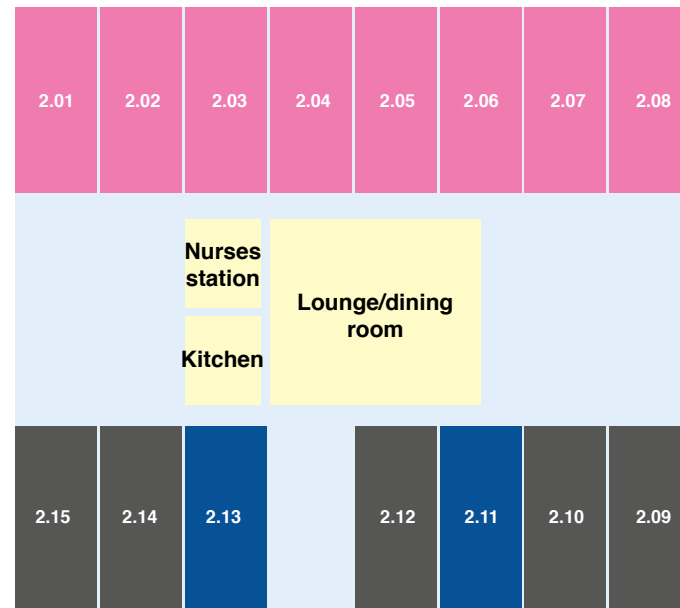
# Aldo Suites (second floor)

---

**PREMIER**

**SUPERIOR**

**EXECUTIVE**



# About Mercy Health

Call now to book a personal tour of Mercy Place Mont Clare.

The modern story of Mercy Health began with the founding of the Order of the Sisters of Mercy in Dublin in 1831 by Catherine McAuley, who dedicated her life to serving people in need.

The Sisters of Mercy went on to found convents, schools and hospitals across the globe. They arrived in Australia in 1846, led by Mother Ursula Frayne.

Following a devastating influenza pandemic, the Sisters of Mercy opened their first Victorian hospital — St Benedict's in Malvern — in 1920.

As Mercy Health, they established a reputation for excellence in care and hospitality that has grown in strength to this day.

A leading Catholic provider of health, aged and community services, our history and future is based on responding to the most significant needs of the time.

We employ and care for people of all faiths and no faith. Our people come from many cultures and backgrounds but share a common goal: to provide compassionate and responsive care to people in need.

## Mercy Place Mont Clare

9 Dean Street  
Claremont WA 6010  
Phone: 1300 599 641  
Email: [MPMontClare@mercy.com.au](mailto:MPMontClare@mercy.com.au)

[mercyhealth.com.au](http://mercyhealth.com.au)



Mercy Health acknowledges Aboriginal and Torres Strait Islander Peoples as the first Australians. We acknowledge the diversity of Indigenous Australia. We respectfully recognise Elders past, present and emerging. This brochure was produced on Wurundjeri Country.

