



Mercy Health

Care first

# Your accommodation options



## Mercy Place Keon Park

15 Tunaley Parade  
Reservoir Vic 3073  
Phone 03 8414 6000  
MPKeonPark@mercy.com.au

[mercyhealth.com.au](http://mercyhealth.com.au)



# Our home

---

At Mercy Place Keon Park, we are proud to provide high-quality care and contemporary accommodation where residents can feel safe, comfortable and valued. You can choose from a variety of room sizes, all of which are stylishly decorated with modern amenities for your enjoyment.

What makes this home truly special is our intimate, family-style approach to living. Our home features six households of 16 residents each, where you can be part of your own small community. There is a separate kitchen, dining and lounge room in each household. There is also a dedicated chapel, two prayer and reflection rooms, a hairdressing salon, a fully equipped gym/wellness centre with personal trainer, a private dining room for special events and an intimate library. Residents, family and friends are also welcome to gather at the ever-popular and vibrant ground-floor café that overlooks the garden, complete with a baby grand piano.

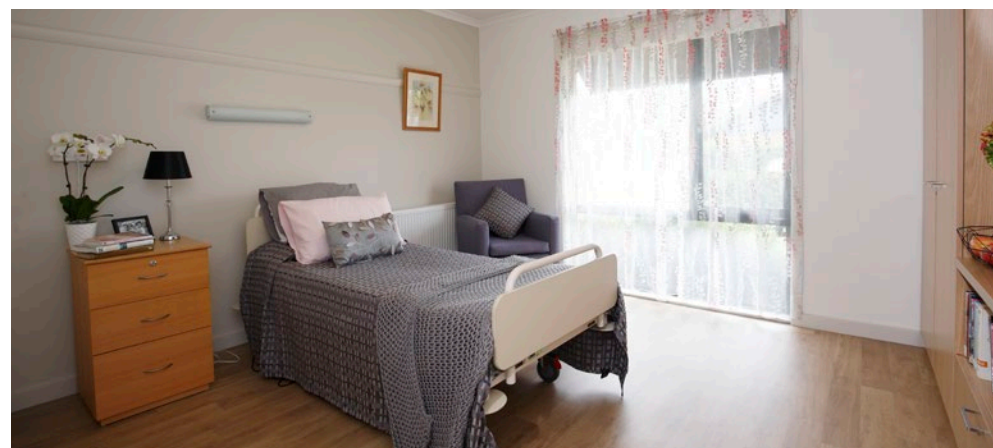


# Choosing a room

---

Our lovely rooms boast a stylish design. Enjoy the quality furniture and fittings, including electric height-adjustable beds, built-in personal mobility aids, heating, air conditioning, wall-mounted flat screen TVs, built-in wardrobes and shelving for personal items. A 24/7 nurse call system is available in all rooms, giving you and your loved ones peace of mind.

***Find your perfect fit by booking a personal tour. Phone 03 8414 6000 today.***



# Our rooms

You can choose to pay for your room by a **Refundable Accommodation Deposit (RAD)**, a **Daily Accommodation Payment (DAP)** or any combination you choose. A RAD is paid as a lump sum. A DAP accrues daily and is paid periodically, for example monthly. A combination payment includes a partial lump sum and daily payments. We also offer a drawdown option.

See our *Understanding the costs* brochure for an explanation of payment options or speak to us about how we can tailor a payment package to suit your needs.

		FEATURES					PAYMENT OPTIONS				
		Room	Ensuite	Size	Floor	View	Extra	RAD	DAP	Combination payment example (50% RAD + 50% DAP)	
Premier		Single	Private	20-24m <sup>2</sup>	G, 1	✓				RAD \$	+ DAP \$
Premier+		Single	Private	17- 21m <sup>2</sup>	G, 1	✓				RAD \$	+ DAP \$
Superior		Single	Private	17m <sup>2</sup>	1	✓	Neighbourhood views			RAD \$	+ DAP \$
Superior+		Single	Private	21m <sup>2</sup>	1	✓	Spacious			RAD \$	+ DAP \$

Prices are effective as of \_\_\_\_\_ and are subject to change.

# Mercy Place Keon Park – Ground floor

## PREMIER

These charming Premier rooms with private ensuites on the ground floor are well-maintained with a contemporary look and feel. Relax in front of your wall-mounted flat screen TV or enjoy lovely views of either the gardens or courtyards.

## PREMIER+

With attractive views of the neighbourhood or courtyard, these Premier+ rooms offer plenty of natural light. There is one larger room which is a firm favourite as it offers more space for your treasured belongings.

## SUPERIOR

Savour views of the local neighbourhood in a stunning Superior room. These beautiful corner rooms are conveniently located close to intimate sitting areas. Our Superior rooms offer private ensuites designed with safety and independence in mind.

## SUPERIOR+

Enjoy the luxury of these highly sought-after Superior+ rooms. These rooms are the most spacious in our home and boast private ensuites and ample natural light. Relax with creature comforts of air conditioning and heating.



# Mercy Place Keon Park – First floor

PREMIER+

SUPERIOR

SUPERIOR+



Call 03 8414 6000 now to book a personal tour  
of Mercy Place Keon Park.

Southern Cross Care (Vic) joined Mercy Health in July 2017.  
Our highly qualified and compassionate teams support you to live life well, the way you choose.

## Mercy Place Keon Park

15 Tunaley Parade  
Reservoir Vic 3073  
Phone 03 8414 6000  
MPKeonPark@mercy.com.au

[mercyhealth.com.au](http://mercyhealth.com.au)

Mercy Health acknowledges  
Aboriginal and Torres Strait  
Islander Peoples as the first  
Australians. We acknowledge the  
diversity of Indigenous Australia.  
We respectfully recognise Elders  
past, present and emerging.

