



Mercy Health

Care first

# Your accommodation options



## Mercy Place Mandurah

1 Hungerford Avenue  
Halls Head WA 6210  
Phone 08 9559 2800  
enquiriesWA@mercy.com.au

[mercyhealth.com.au](http://mercyhealth.com.au)



# Our home

---

At Mercy Place Mandurah, we are proud to provide high-quality care and accommodation where residents can feel safe, comfortable and valued. You can choose from a variety of room layouts, all of which are stylishly decorated with modern amenities for your enjoyment.

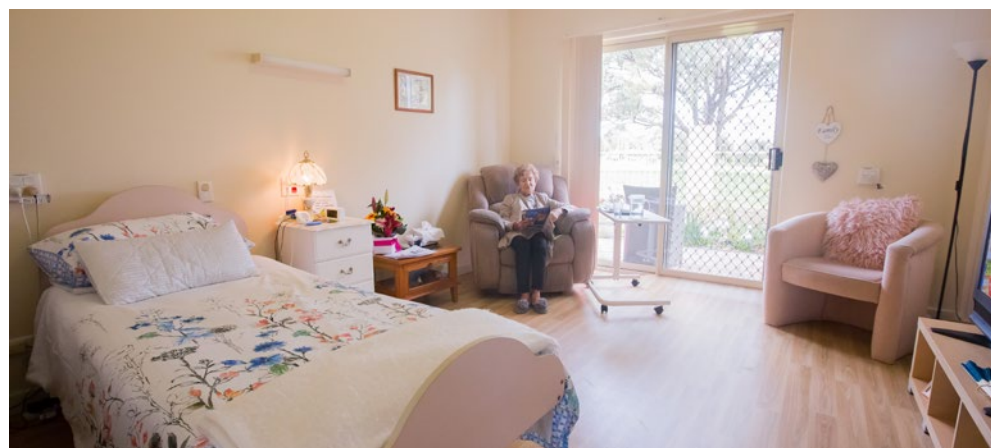
Our contemporary home features large dining rooms, recreational areas and cosy sitting corners where you can relax or entertain family and friends. All common areas have well-appointed furniture and premium décor. Enjoy the sunshine in our landscaped gardens, visit the on-site hair salon or participate in a wide range of engaging activities.



# Choosing a room

---





Our lovely rooms all boast a contemporary and stylish design. Enjoy the good-quality furniture and fittings, including reverse-cycle air conditioning, electric beds and built-in wardrobes with ample space for your personal treasures. Add a touch of luxury by choosing a room with plenty of natural light or beautiful views.



# Our rooms

You can choose to pay for your room by a **Refundable Accommodation Deposit (RAD)**, a **Daily Accommodation Payment (DAP)** or any combination you choose. A RAD is paid as a lump sum. A DAP accrues daily and is paid periodically, for example monthly. A combination payment includes a partial lump sum and daily payments. We also offer a drawdown option.

See our *Understanding the costs* brochure for an explanation of payment options or speak to us about how we can tailor a payment package to suit your needs.

		FEATURES			PAYMENT OPTIONS				
		Room	Ensuite	Size	Floor	RAD	DAP	Combination payment example (50% RAD + 50% DAP)	
Classic		Shared	Shared	20–29m <sup>2</sup>	G	\$	\$	RAD \$	+ DAP \$
Grande		Single	Shared/Private	12–18m <sup>2</sup>	G	\$	\$	RAD \$	+ DAP \$
Deluxe		Single	Private	19–32m <sup>2</sup>	G	\$	\$	RAD \$	+ DAP \$
Premier		Single	Private	21–24m <sup>2</sup>	G	\$	\$	RAD \$	+ DAP \$

Prices are effective as of

and are subject to change.

# Sandalwood Wing

## DELUXE

Savour the generous space in these beautiful, airy Deluxe rooms that measure an impressive 19–32m<sup>2</sup>. Located throughout the Hungerford, Sandalwood and Dolphin wings, the private rooms boast private ensuites and most have lovely views of the Mercy Place Mandurah gardens or direct courtyard access. Enjoy high-quality fittings, including a built-in wardrobe with ample space for your personal treasures.



# Dorothy and Sandalwood wings

**DELUXE**

**PREMIER**

Located in the Dorothy and Dolphin wings, these highly sought-after Premier suites offer ample natural light and views of the courtyard garden. Most rooms even boast direct access to the garden. The elegantly decorated 21–24m<sup>2</sup> rooms are built for comfort with a private ensuite, reverse-cycle air conditioning and plenty of storage space.



# Dolphin and Hungerford wings

## CLASSIC

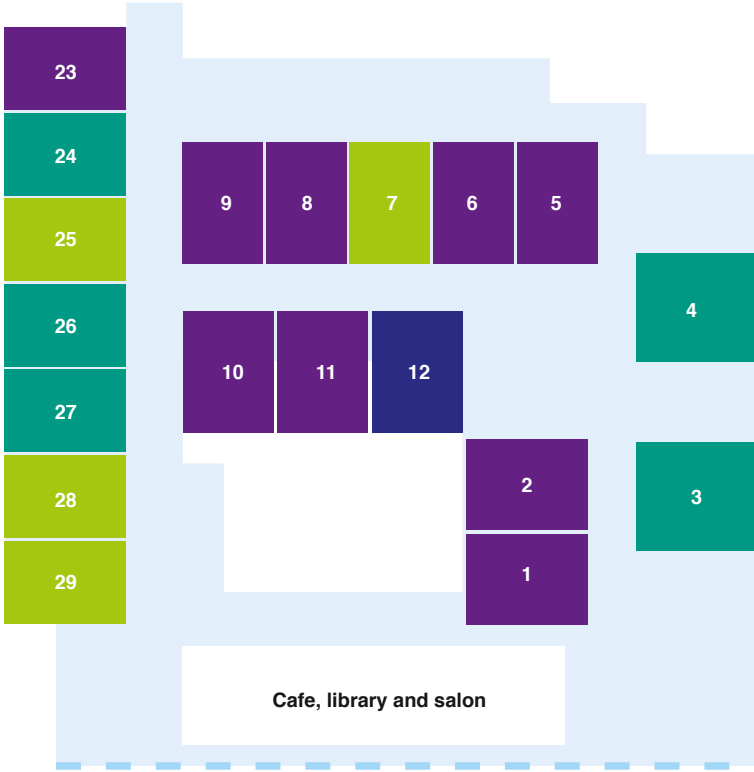
These cosy shared rooms within the Dolphin and Hungerford wings offer shared bathrooms designed to maximise safety and independence. The well-maintained rooms have garden or courtyard views and, within the Dolphin Wing memory support unit, direct access outdoors. Quality fittings include reverse-cycle air conditioning and electronic beds.

## GRANDE

If you value garden views, you will adore these intimate Grande rooms located in the Hungerford, Pelican and Dolphin wings. Refurbished in 2018, these modern rooms have easy access to a shared or private ensuite. You will also enjoy the comfort of reverse-cycle air conditioning to ease you through the warmer months.

## DELUXE

## PREMIER



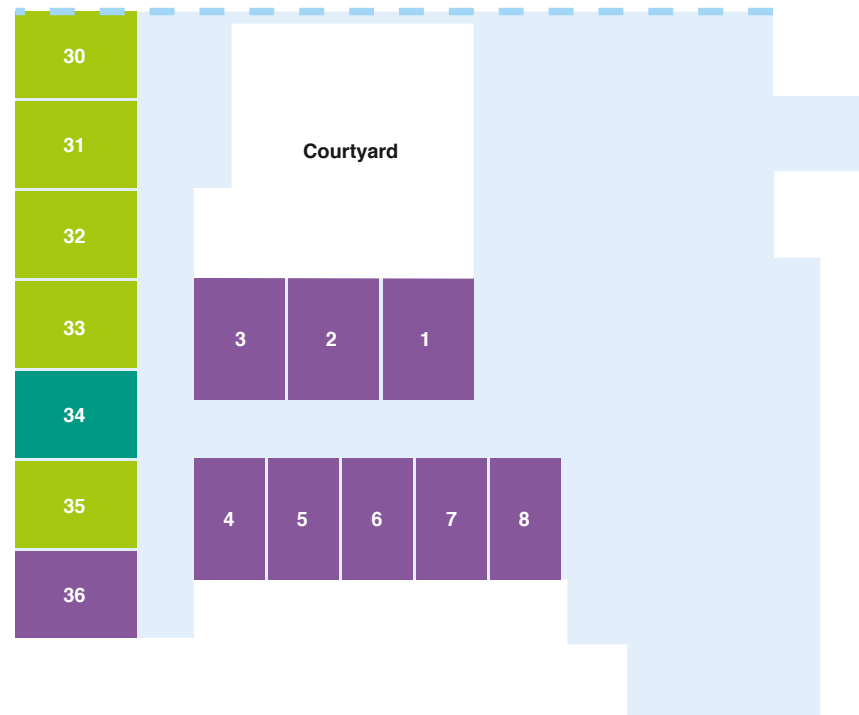
# Hungerford and Pelican wings

---

CLASSIC

DELUXE

GRANDE





Call now to book a personal tour  
of Mercy Place Mandurah.

## Mercy Place Mandurah

1 Hungerford Avenue  
Halls Head WA 6210  
Phone 08 9559 2800  
[enquiriesWA@mercy.com.au](mailto:enquiriesWA@mercy.com.au)

[mercyhealth.com.au](http://mercyhealth.com.au)



Mercy Health acknowledges  
Aboriginal and Torres Strait  
Islander Peoples as the first  
Australians. We acknowledge the  
diversity of Indigenous Australia.  
We respectfully recognise Elders  
past, present and emerging.