



Mercy Health

Care first

# Your accommodation options



## Mercy Place Mont Clare

9 Dean Street  
Claremont WA 6010  
Phone: 1300 599 641  
Email: [MPMontClare@mercy.com.au](mailto:MPMontClare@mercy.com.au)

[mercyhealth.com.au](http://mercyhealth.com.au)

# Our home

---



At Mercy Place Mont Clare, we are proud to provide high-quality care and accommodation where residents can feel safe, comfortable and valued. You can choose from a variety of rooms, all of which are stylishly decorated with modern amenities for your enjoyment.

Built in 2012, our contemporary home features large dining rooms, lounge rooms, recreational areas and cosy sitting corners where you can relax or entertain family and friends. All common

areas display contemporary artwork and have well-appointed furniture and premium décor. Enjoy the fresh air in one of our landscaped gardens or the two popular rooftop escapes, which offer barbecues and outdoor settings for entertainment and leisure.

Mercy Place Mont Clare provides additional services for residents. Please speak with the Client Services Team for a full list of services and the cost.

# Choosing a room

---

Our bright, spacious rooms all boast a sophisticated and stylish design. Enjoy the high-quality furniture and fittings, including private ensuites, wall-mounted flat screen TVs, WiFi, reverse-cycle air conditioning and built-in wardrobes with ample space for your personal treasures. Add a touch of luxury by choosing a room with beautiful views of the Swan River or Perth CBD from a private or shared balcony.



# Our rooms

You can choose to pay for your suite by a **Refundable Accommodation Deposit (RAD)**, a **Daily Accommodation Payment (DAP)** or any combination you choose. A RAD is paid as a lump sum. A DAP accrues daily and is paid periodically, for example monthly. A combination payment includes a partial lump sum and daily payments. We also offer a drawdown option.

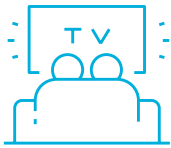
See our *Understanding the costs* brochure for an explanation of payment options or speak to us about how we can tailor a payment package to suit your needs.

	FEATURES					PAYMENT OPTIONS			
	Room	Ensuite	Size	Floor	View	RAD	DAP	Combination payment example (50% RAD + 50% DAP)	
Deluxe	Single	Private	21 – 25m <sup>2</sup>	1		\$ 600,000	\$ 138.41	RAD \$ 300,000	+ DAP \$ 69.21
Deluxe+	Single	Private	21.9 – 25.1m <sup>2</sup>	G, 1	✓	\$ 650,000	\$ 149.95	RAD \$ 325,000	+ DAP \$ 74.97
Premier	Single	Private	20.3m <sup>2</sup>	1, 2	✓	\$ 726,500	\$ 167.59	RAD \$ 363,250	+ DAP \$ 83.80
Executive	Single	Private	20 – 25m <sup>2</sup>	1, 2	✓	\$ 888,500	\$ 204.96	RAD \$ 444,250	+ DAP \$ 102.48
Premier Executive	Single	Private	25m <sup>2</sup>	1, 2	✓	\$ 1,175,990	\$ 271.28	RAD \$ 587,995	+ DAP \$ 135.64

Prices are effective as of 01 February 2025 and are subject to change.

# Mercy Plus

Mercy Plus (Additional Services) offers an exceptional range of amenities and activities designed to enrich your experience at Mercy Health. These thoughtfully curated services go beyond the ordinary to enhance daily living, ensuring our residents enjoy a fulfilling and vibrant lifestyle.



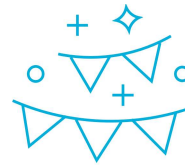
## Engage & Unwind: A World of Entertainment at Your Fingertips

- Stay connected with daily newspapers in common areas
- Enjoy the latest shows in your room on a Smart TV
- Access Wi-Fi to stream your favourite movies or TV shows
- Relax with streaming services available in common areas
- Keep connected with a personal phone in your room (on request)



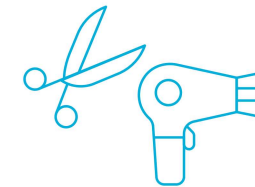
## Culinary Delights & Cherished Moments

- Savour gourmet choices with our daily choice of hot lunches
- Start your day right with a hot breakfast, twice a week
- Indulge in fine dining & wine served with dinner every day
- Unwind & socialise at our weekly happy hour
- Relish in the warmth of weekly coffee gatherings
- Celebrate life with monthly celebratory festivities



## Vibrant Living: Social Events & Adventures

- Explore new horizons with our monthly bus trips
- Enjoy the magic of cinema with monthly movie nights
- Be entertained by talented performers every month



## Tailored Care & Personal Touches

- Keep your wardrobe organised with personalised clothing labels
- Indulge in relaxation with monthly pamper sessions
- Experience the joy of receiving small gifts to celebrate key moments
- Stay connected with onsite tech support, just for you

Speak with the Client Services team to find out more about Mercy Plus at your Mercy Health home.

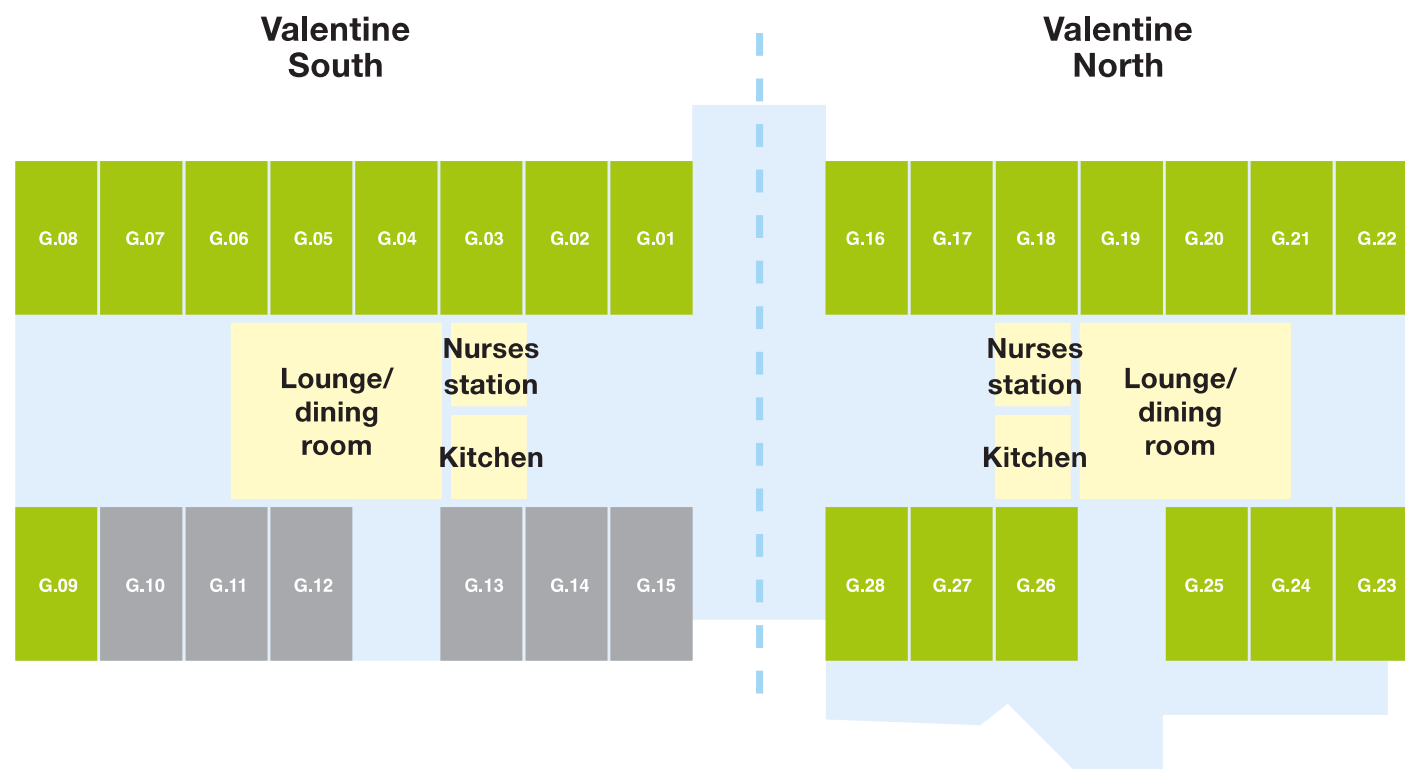
# Valentine (ground floor)

## DELUXE

Our Deluxe rooms are well-maintained with a comfortable look and feel. All rooms feature a multi-function high/low electronic bed, views facing Claremont Quarter or internal spaces, and some boast a balcony or garden access. Enjoy your private ensuite designed with safety and independence in mind, as well as your own reverse-cycle air conditioning.

## DELUXE+

Choose to live in one of our Deluxe+ rooms, and you won't be disappointed. With a shared or private balcony, a room with a view will be yours to revel in. All rooms have their own private ensuite, a built-in wardrobe as well as reverse-cycle air conditioning to keep you comfortable all year round.



# McDonald (first floor)

**DELUXE**

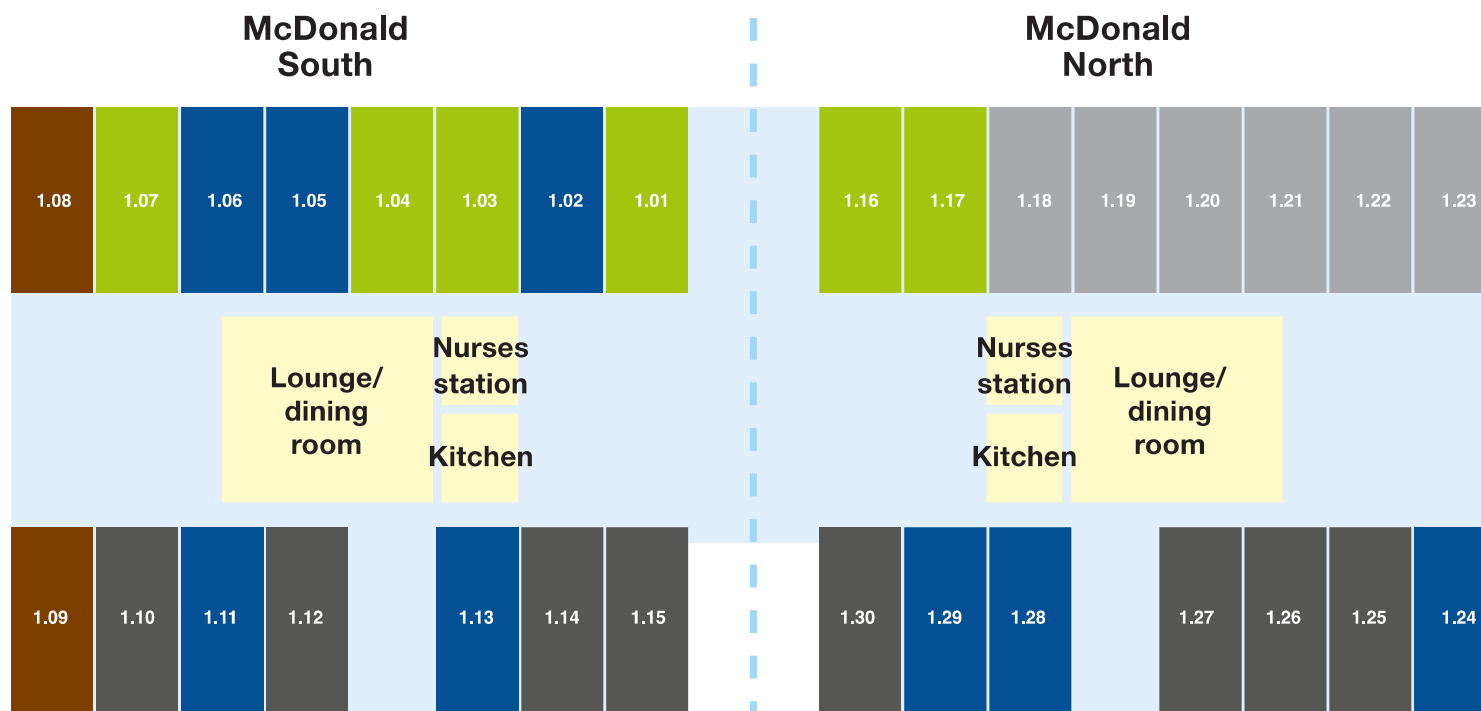
**DELUXE+**

**PREMIER**

Several of these desirable rooms on the first and second floors offer partial views of the Swan River or Perth CBD from private balconies and some also feature skylights. Enjoy your personal wall-mounted flat screen TV and a multi-function high/low bed, reverse-cycle air conditioning, as well as easy access to landscaped gardens and rooftops.

**EXECUTIVE**

Enjoy the abundant natural light and fresh air afforded by large windows in these sumptuous rooms. Located on the first and second floors, the Executive rooms measure 20–25m<sup>2</sup> and offer river and city views from semi-private or private balconies. Enjoy the high-quality furniture and fittings, including multi-function high/low beds, wall-mounted flat screen TVs, as well as reverse-cycle air conditioning.



**PREMIER EXECUTIVE**

If you like living in the lap of luxury, secure one of just seven stunning Premier Executive rooms located in prime position on the uppermost floors of Mercy Place Mont Clare. With abundant natural light and excellent views of the Swan River or Perth CBD, you'll be tempted to spend all day entertaining

on your spacious semi-private or private balcony. Measuring 25m<sup>2</sup>, the expansive rooms boast direct access to the rooftop gardens. Our Premier Executive rooms feature stylish furniture and fittings including wall-mounted flat screen TVs and reverse-cycle air conditioning.

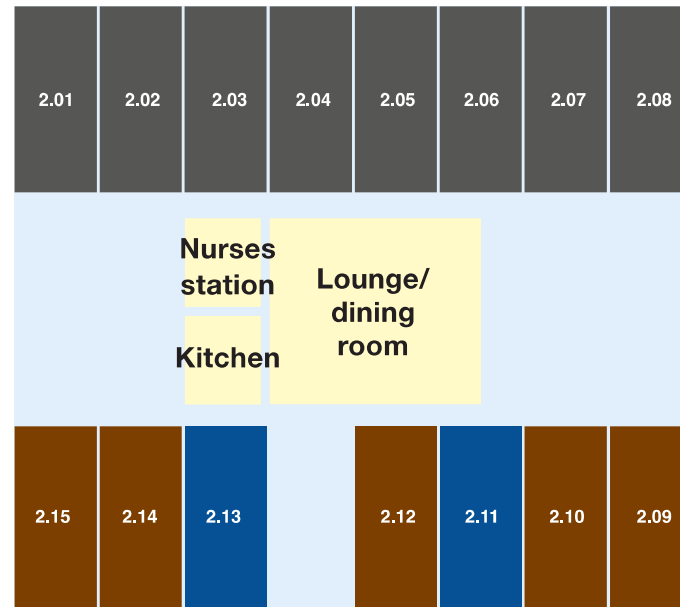
# Aldo (second floor)

---

**PREMIER**

**EXECUTIVE**

**PREMIER EXECUTIVE**



# About Mercy Health

Call now to book  
a personal tour  
of Mercy Place  
Mont Clare.

The modern story of Mercy Health began with the founding of the Order of the Sisters of Mercy in Dublin in 1831 by Catherine McAuley, who dedicated her life to serving people in need.

The Sisters of Mercy went on to found convents, schools and hospitals across the globe. They arrived in Australia in 1846, led by Mother Ursula Frayne.

Following a devastating influenza pandemic, the Sisters of Mercy opened their first Victorian hospital — St Benedict's in Malvern — in 1920.

As Mercy Health, they established a reputation for excellence in care and hospitality that has grown in strength to this day.

A leading Catholic provider of health, aged and community services, our history and future is based on responding to the most significant needs of the time.

We employ and care for people of all faiths and no faith. Our people come from many cultures and backgrounds but share a common goal: to provide compassionate and responsive care to people in need.

## Mercy Place Mont Clare

9 Dean Street  
Claremont WA 6010  
Phone: 1300 599 641  
Email: [MPMontClare@mercy.com.au](mailto:MPMontClare@mercy.com.au)

[mercyhealth.com.au](http://mercyhealth.com.au)



Mercy Health acknowledges Aboriginal and Torres Strait Islander Peoples as the First Australians. We acknowledge the diversity of Indigenous Australia. We respectfully recognise Elders past, present and emerging. This brochure was produced on Wurundjeri Country.

