



Mercy Health

Care first

# Your accommodation options



## Mercy Place East Melbourne

22 Verona Lane (off Gipps Street)

East Melbourne Vic 3002

Phone 03 9413 1777

Information-MPEM@mercy.com.au

[mercyhealth.com.au](http://mercyhealth.com.au)



# Our home

---

At Mercy Place East Melbourne, we are proud to provide high-quality care and accommodation where residents can feel safe, comfortable and valued. You can choose from a variety of room layouts, all of which are stylishly decorated with modern amenities for your enjoyment.

Our contemporary home features large dining rooms, activity rooms, a library, kitchenettes and cosy sitting areas where you can relax or entertain family and friends. All common areas display contemporary artwork and have well-appointed furniture and premium décor. Enjoy the sunshine in one of our two internal courtyards, visit our on-site hairdresser or attend a service or event at our beautiful chapel.



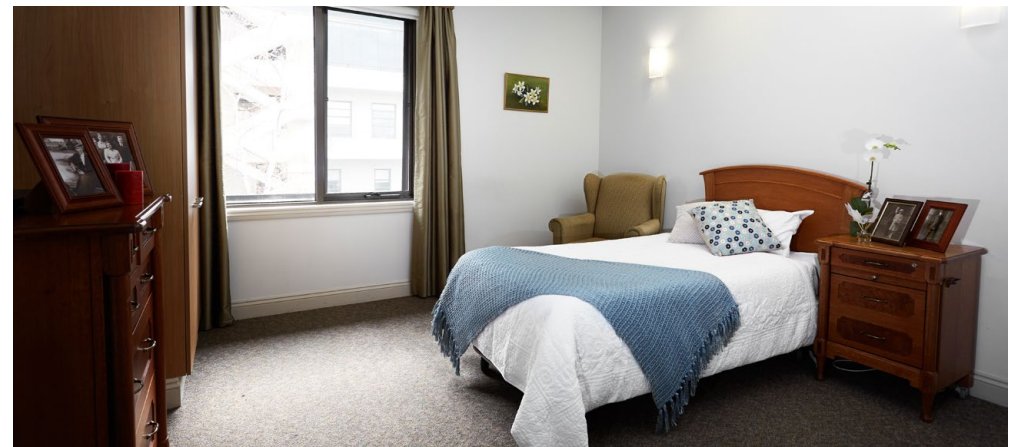
# Choosing a room

---

Spread out over three floors, our lovely rooms all boast a contemporary and stylish design. Enjoy the high-quality furniture and fittings, including wall-mounted flat screen TVs, air conditioning and heating, built-in wardrobes and space for your personal treasures. Add a touch of luxury by choosing a room with a private ensuite, natural light or beautiful views.

***Find your perfect fit by booking a personal tour.***

***Phone 03 9413 1777.***



# Our rooms

You can choose to pay for your room by a **Refundable Accommodation Deposit (RAD)**, a **Daily Accommodation Payment (DAP)** or any combination you choose. A RAD is paid as a lump sum. A DAP accrues daily and is paid periodically, for example monthly. A combination payment includes a partial lump sum and daily payments. We also offer a drawdown option.

See our *Understanding the costs* brochure for an explanation of payment options or speak to us about how we can tailor a payment package to suit your needs.

		FEATURES					PAYMENT OPTIONS				
		Room	Ensuite	Size	Floor	View	Extra	RAD	DAP	Combination payment example (50% RAD + 50% DAP)	
Deluxe		Single	Shared	17m <sup>2</sup>	1			\$	\$	RAD \$	+ DAP \$
Premier		Single	Private	17m <sup>2</sup>	G, 1	1st floor		\$	\$	RAD \$	+ DAP \$
Premier+		Single	Private	17m <sup>2</sup>	G, 1	✓		\$	\$	RAD \$	+ DAP \$
Superior		Single	Private	17m <sup>2</sup>	2	✓	Extra services	\$	\$	RAD \$	+ DAP \$
Superior+		Single	Private	17-26m <sup>2</sup>	2	Gipps St	Extra services, corner alcoves	\$	\$	RAD \$	+ DAP \$

Prices are effective as of \_\_\_\_\_ and are subject to change.

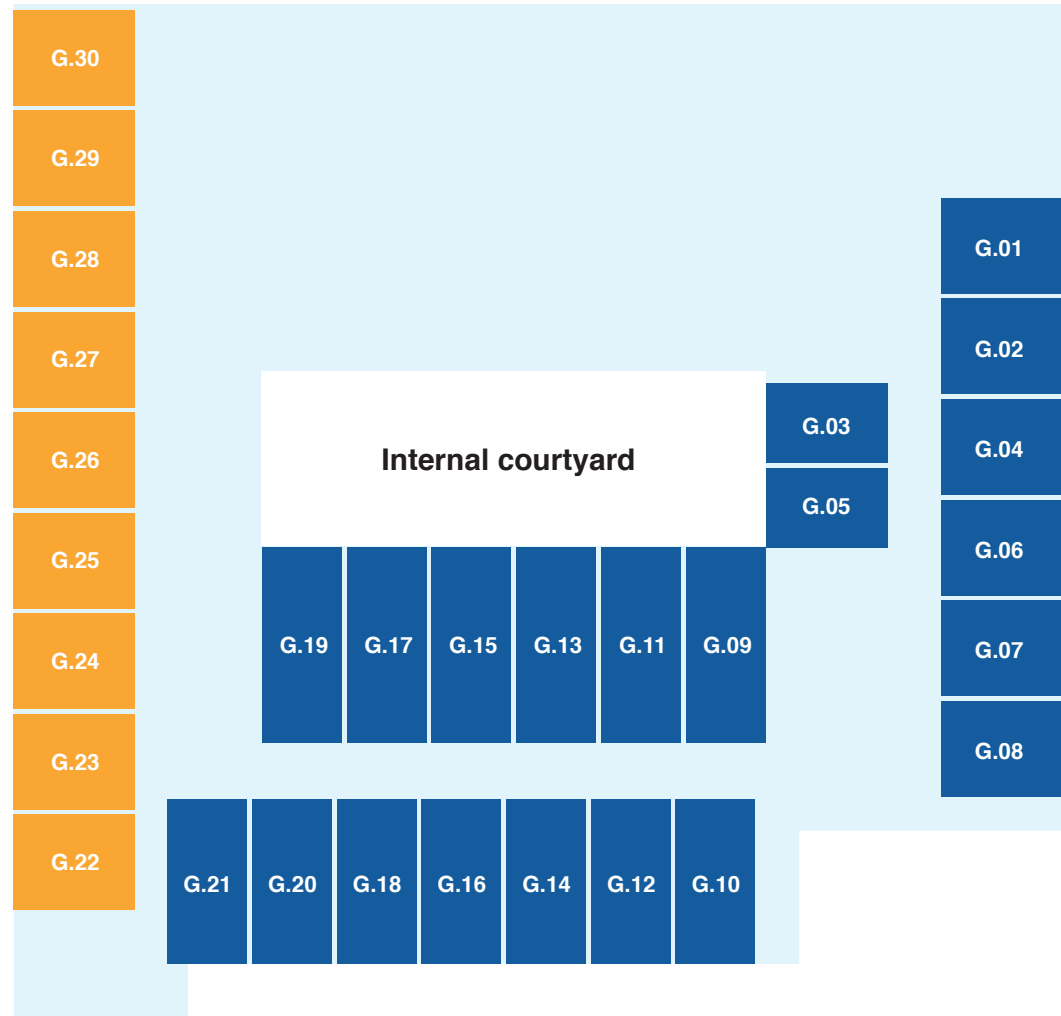
# Ground floor

## PREMIER+

Enjoy your own private ensuite in a lovely ground or first floor room that boasts a contemporary look and feel. Our Premier+ suites offer attractive, high-quality furniture and fittings including a wall-mounted flat screen TV, and the added benefit of a built-in wardrobe for your personal treasures.

## PREMIER

These charming Premier rooms on the ground and first floors are well-maintained with a contemporary look and feel. Relax in front of your wall-mounted flat screen TV and savour your own private ensuite, air conditioning and heating and built-in wardrobe with ample storage space.



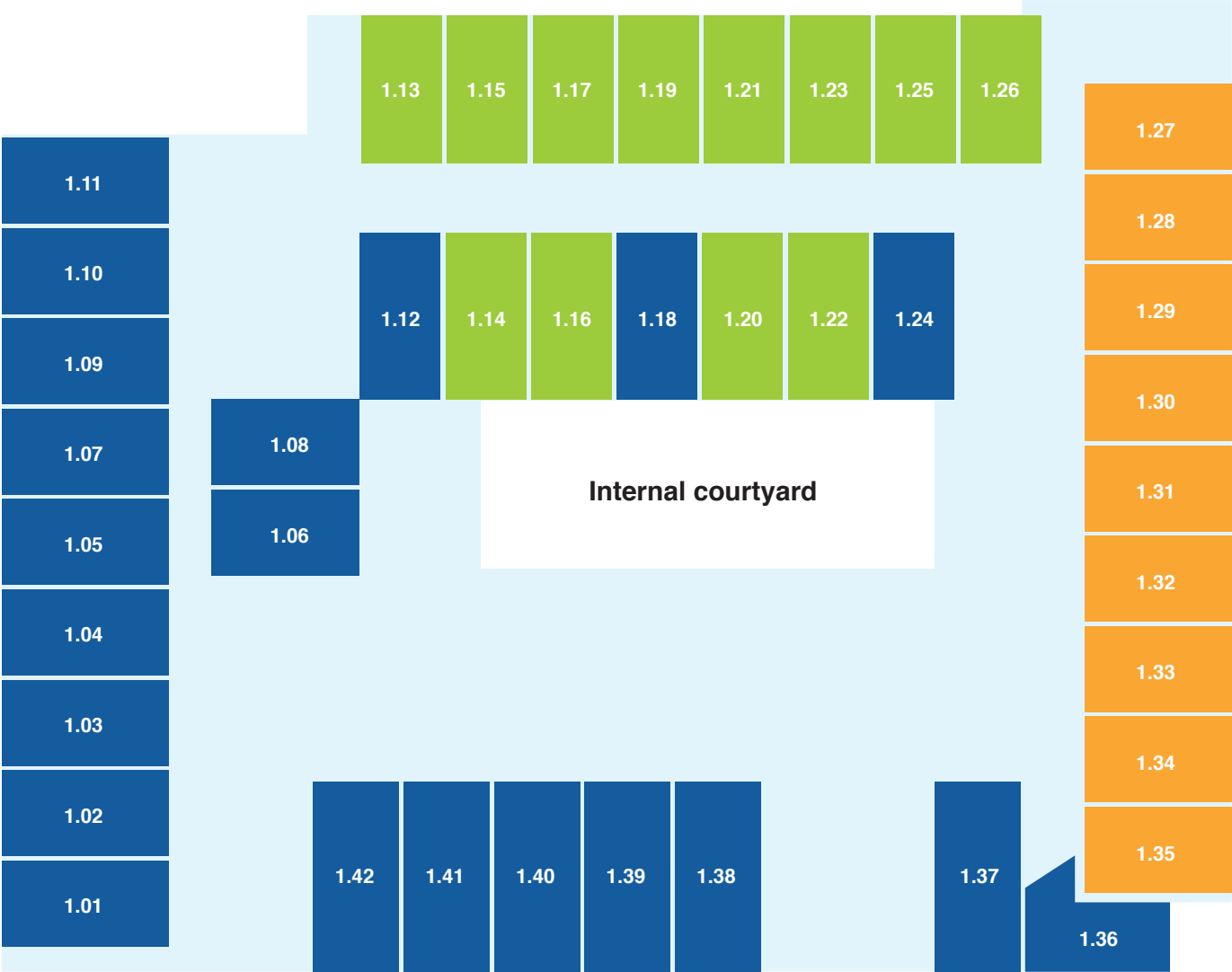
# First floor

## DELUXE

Our Deluxe first floor rooms offer a contemporary and stylish design with a shared ensuite and high-quality fittings including a wall-mounted flat screen TV, air conditioning and heating. With a built-in wardrobe, there's plenty of space to store your belongings.

## PREMIER+

## PREMIER



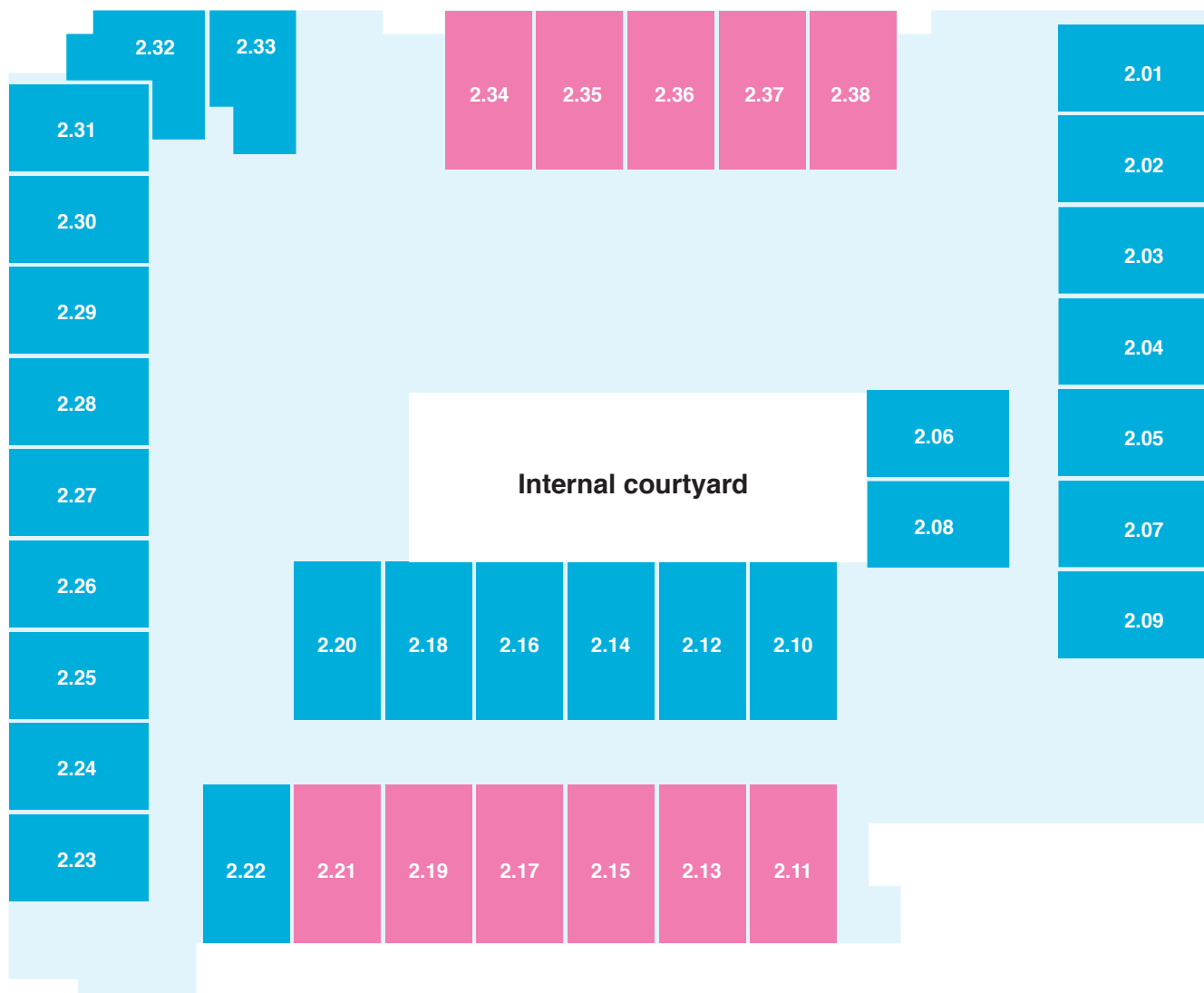
# Second floor

## SUPERIOR+

If you like living in the lap of luxury, secure a stunning Superior+ suite, some of which enjoy a north-facing aspect. Located on the second floor, the rooms range from 17–26m<sup>2</sup> and there are two highly sought-after corner alcoves. The Superior+ suites are stylishly designed with private ensuites and high-quality furniture. These rooms also offer extra services including an additional meal choice and fresh flowers.

## SUPERIOR

Located on the second floor, many of these desirable Superior rooms offer natural light and views of leafy Gipps Street. Relish the generous storage space and your own wall-mounted flat screen TV, air conditioning and heating and private ensuite. Indulge in extra services including an additional meal choice and fresh flowers.





Call now to book a personal tour  
of Mercy Place East Melbourne.

## Mercy Place East Melbourne

22 Verona Lane (off Gipps Street)  
East Melbourne Vic 3002  
Phone 03 9413 1777  
Information-MPEM@mercy.com.au

[mercyhealth.com.au](http://mercyhealth.com.au)

Mercy Health acknowledges  
Aboriginal and Torres Strait  
Islander Peoples as the first  
Australians. We acknowledge the  
diversity of Indigenous Australia.  
We respectfully recognise Elders  
past, present and emerging.