



Mercy Health

Care first

Your accommodation options



Mercy Place East Melbourne

22 Verona Lane (off Gipps Street)

East Melbourne Vic 3002

Phone 03 9413 1777

Information-MPEM@mercy.com.au

mercyhealth.com.au



Our home

At Mercy Place East Melbourne, we are proud to provide high-quality care and accommodation where residents can feel safe, comfortable and valued. You can choose from a variety of room layouts, all of which are stylishly decorated with modern amenities for your enjoyment.

Our contemporary home features large dining rooms, activity rooms, a library, kitchenettes and cosy sitting areas where you can relax or entertain family and friends. All common areas display contemporary artwork and have well-appointed furniture and premium décor. Enjoy the sunshine in one of our two internal courtyards, visit our on-site hairdresser or attend a service or event at our beautiful chapel.

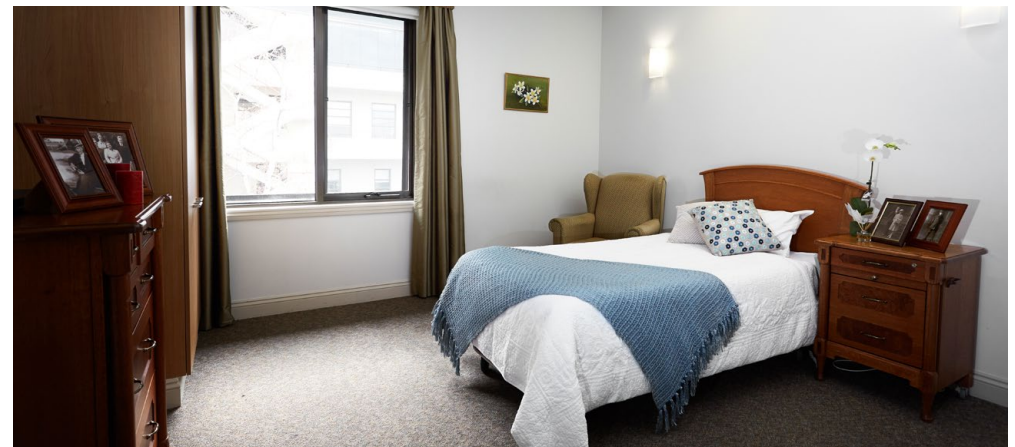


Choosing a room

Spread out over three floors, our lovely rooms all boast a contemporary and stylish design. Enjoy the high-quality furniture and fittings, including wall-mounted flat screen TVs, air conditioning and heating, built-in wardrobes and space for your personal treasures. Add a touch of luxury by choosing a room with a private ensuite, natural light or beautiful views.

Find your perfect fit by booking a personal tour.

Phone 03 9413 1777.



Our rooms

You can choose to pay for your room by a **Refundable Accommodation Deposit (RAD)**, a **Daily Accommodation Payment (DAP)** or any combination you choose. A RAD is paid as a lump sum. A DAP accrues daily and is paid periodically, for example monthly. A combination payment includes a partial lump sum and daily payments. We also offer a drawdown option.

See our *Understanding the costs* brochure for an explanation of payment options or speak to us about how we can tailor a payment package to suit your needs.

		FEATURES					PAYMENT OPTIONS				
		Room	Ensuite	Size	Floor	View	Extra	RAD	DAP	Combination payment example (50% RAD + 50% DAP)	
Deluxe		Single	Shared	17m ²	1			\$	\$	RAD \$	+ DAP \$
Premier		Single	Private	17m ²	G, 1	1st floor		\$	\$	RAD \$	+ DAP \$
Premier+		Single	Private	17m ²	G, 1	✓		\$	\$	RAD \$	+ DAP \$
Superior		Single	Private	17m ²	2	✓	Extra services	\$	\$	RAD \$	+ DAP \$
Superior+		Single	Private	17-26m ²	2	Gipps St	Extra services, corner alcoves	\$	\$	RAD \$	+ DAP \$

Prices are effective as of _____ and are subject to change.

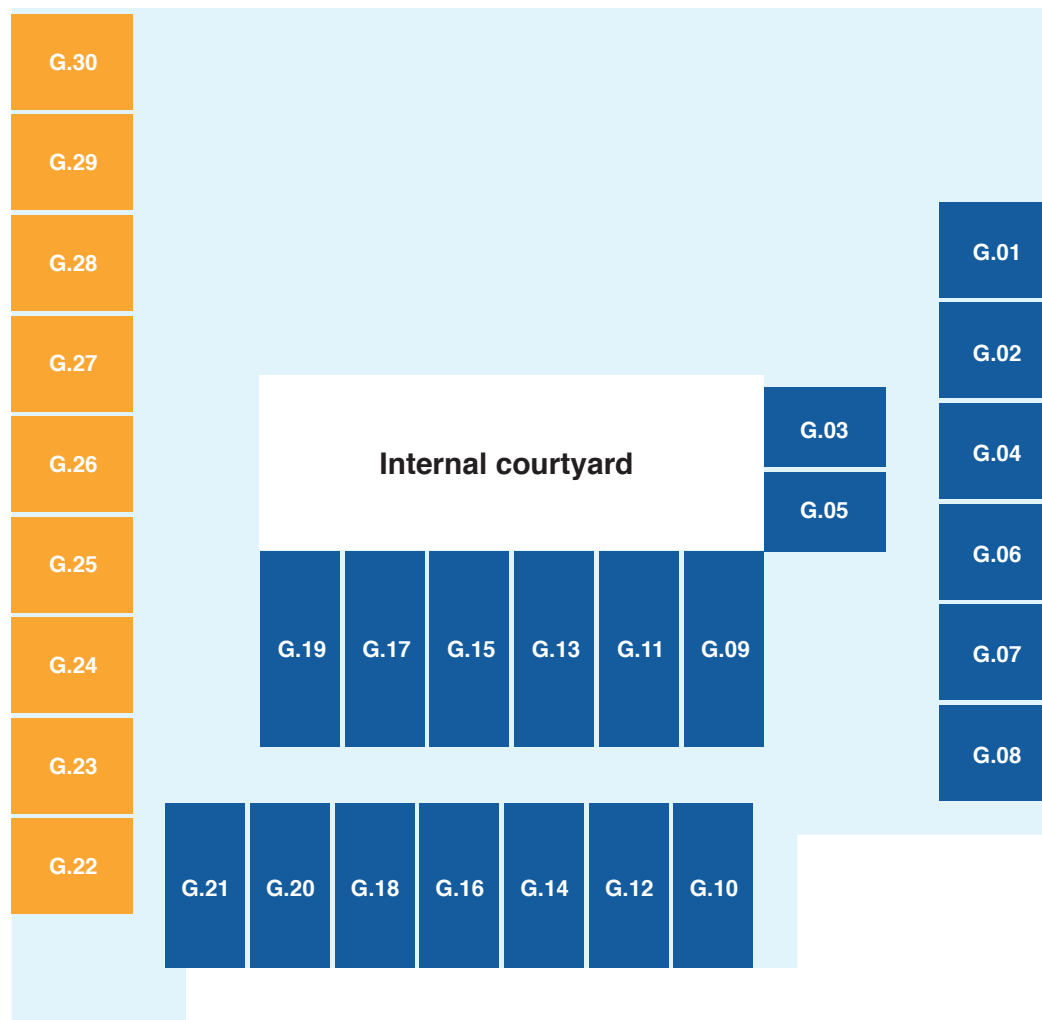
Ground floor

PREMIER+

Enjoy your own private ensuite in a lovely ground or first floor room that boasts a contemporary look and feel. Our Premier+ suites offer attractive, high-quality furniture and fittings including a wall-mounted flat screen TV, and the added benefit of a built-in wardrobe for your personal treasures.

PREMIER

These charming Premier rooms on the ground and first floors are well-maintained with a contemporary look and feel. Relax in front of your wall-mounted flat screen TV and savour your own private ensuite, air conditioning and heating and built-in wardrobe with ample storage space.



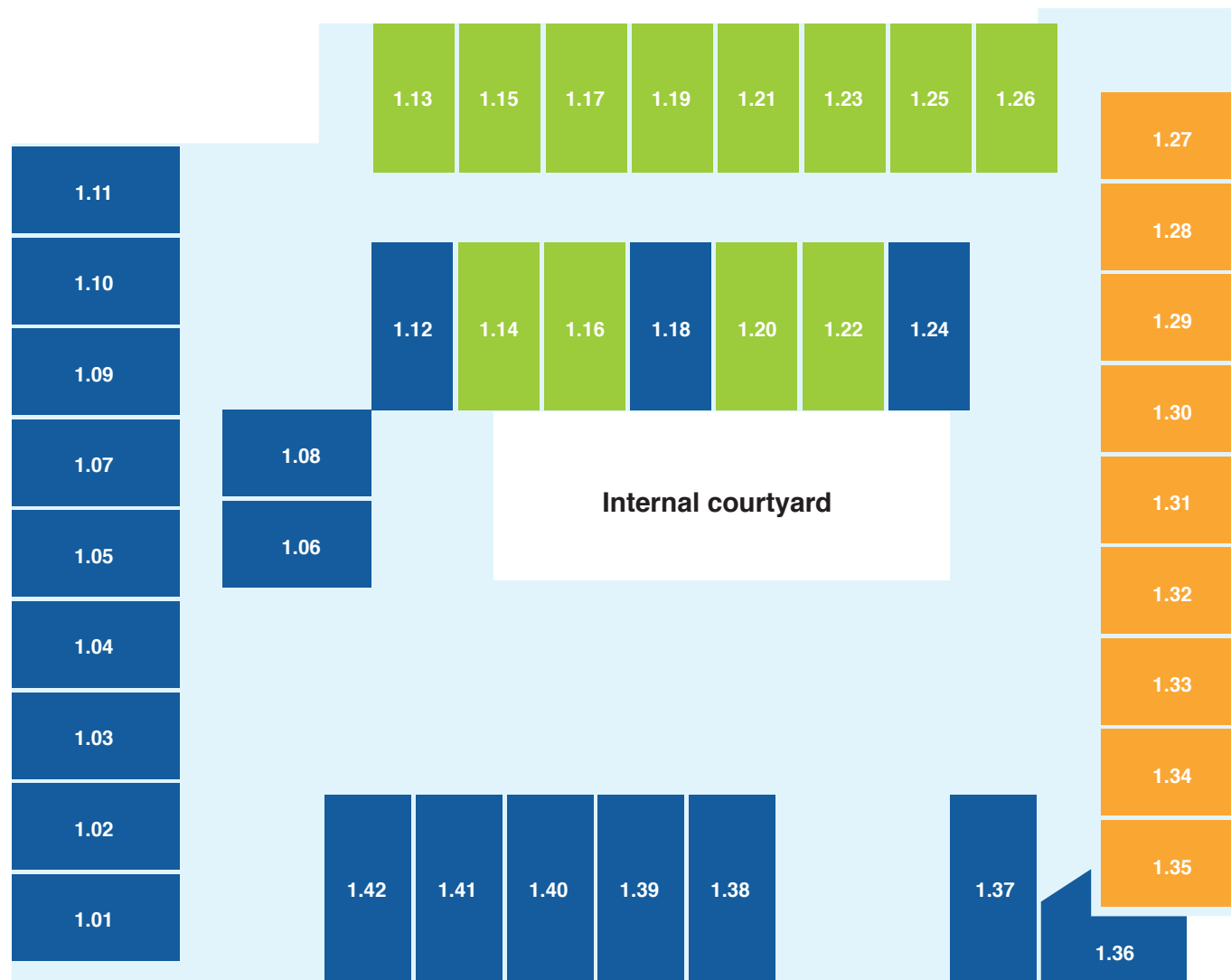
First floor

DELUXE

Our Deluxe first floor rooms offer a contemporary and stylish design with a shared ensuite and high-quality fittings including a wall-mounted flat screen TV, air conditioning and heating. With a built-in wardrobe, there's plenty of space to store your belongings.

PREMIER+

PREMIER



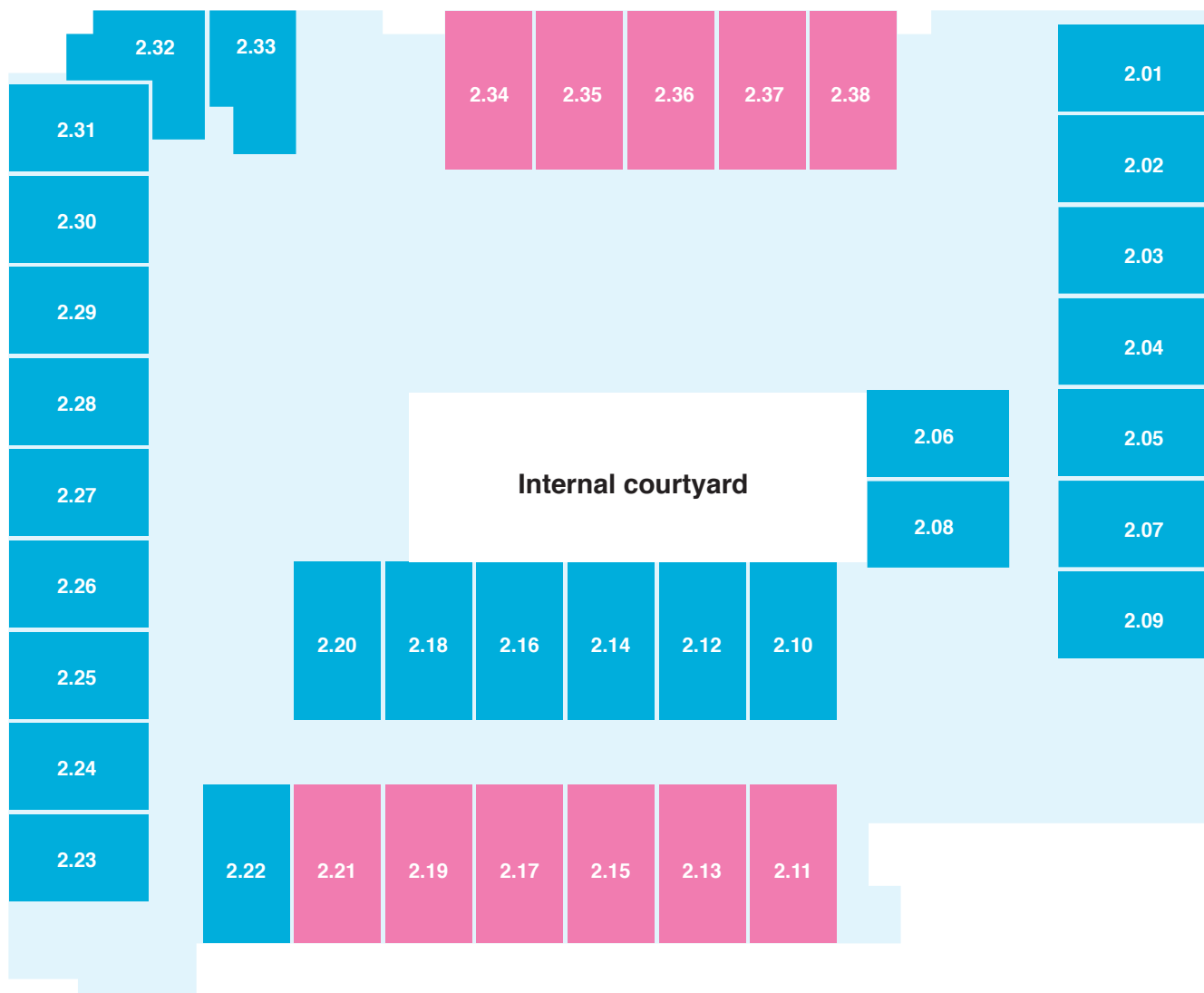
Second floor

SUPERIOR+

If you like living in the lap of luxury, secure a stunning Superior+ suite, some of which enjoy a north-facing aspect. Located on the second floor, the rooms range from 17–26m² and there are two highly sought-after corner alcoves. The Superior+ suites are stylishly designed with private ensuites and high-quality furniture. These rooms also offer extra services including an additional meal choice and fresh flowers.

SUPERIOR

Located on the second floor, many of these desirable Superior rooms offer natural light and views of leafy Gipps Street. Relish the generous storage space and your own wall-mounted flat screen TV, air conditioning and heating and private ensuite. Indulge in extra services including an additional meal choice and fresh flowers.



Call now to book a personal tour
of Mercy Place East Melbourne.

Mercy Place East Melbourne

22 Verona Lane (off Gipps Street)
East Melbourne Vic 3002
Phone 03 9413 1777
Information-MPEM@mercy.com.au

mercyhealth.com.au

Mercy Health acknowledges
Aboriginal and Torres Strait
Islander Peoples as the first
Australians. We acknowledge the
diversity of Indigenous Australia.
We respectfully recognise Elders
past, present and emerging.